

Finding Genetic Markers For Resistance To Gastrointestinal Parasites In Sheep And Goats

By Zaira M. Estrada Reyes¹, Yoko Tsukahara², Arthur L. Goetsch², Terry A. Gipson², Tilahun Sahlu²,

Richard Puchala² and Raluca G. Mateescu¹

¹Department of Animal Sciences and ²Department of Large Animal Clinical Sciences, University of Florida

² American Institute for Goat Research, Langston University, Langston, OK, USA

Gastrointestinal nematodes are the most important internal parasites affecting the small ruminant industry in U.S. and around the world. They are a major limiting factor of production efficiency in sheep and goats in tropical and subtropical environments. In particular, *Haemonchus contortus* is the most pathogenic parasite of the abomasum in the Southern and Western U.S.

According to the USDA National Animal Health Monitoring System, gastrointestinal nematodes were the primary cause of death loss in 2015, resulting in almost 87,000 goat and kid deaths in US. Similarly, 34,782 lamb and sheep deaths were associated to gastrointestinal nematodes in 2014.

Traditionally, producers rely on the use of anthelmintic drugs to control internal parasites. However, the widespread of an-

thelmintic resistance has encouraged the development of alternative strategies. Development and use of population specific genomic tools in selection to improve resistance to gastrointestinal nematodes represents an alternative approach.

Breeding parasite resistant sheep that are less dependent on the use of anthelmintics improves sustainability and profitability of sheep and goat farming systems in hot and humid regions of the U.S. The main benefits of using selection to enhance parasite resistance in sheep and goat systems are that animals can be selected at early age, the genetic change is transmitted to the following generations, and infection is decreased, leading to additional benefits for susceptible animals grazing in the same flock. Besides phenotypic markers such as fecal egg count,

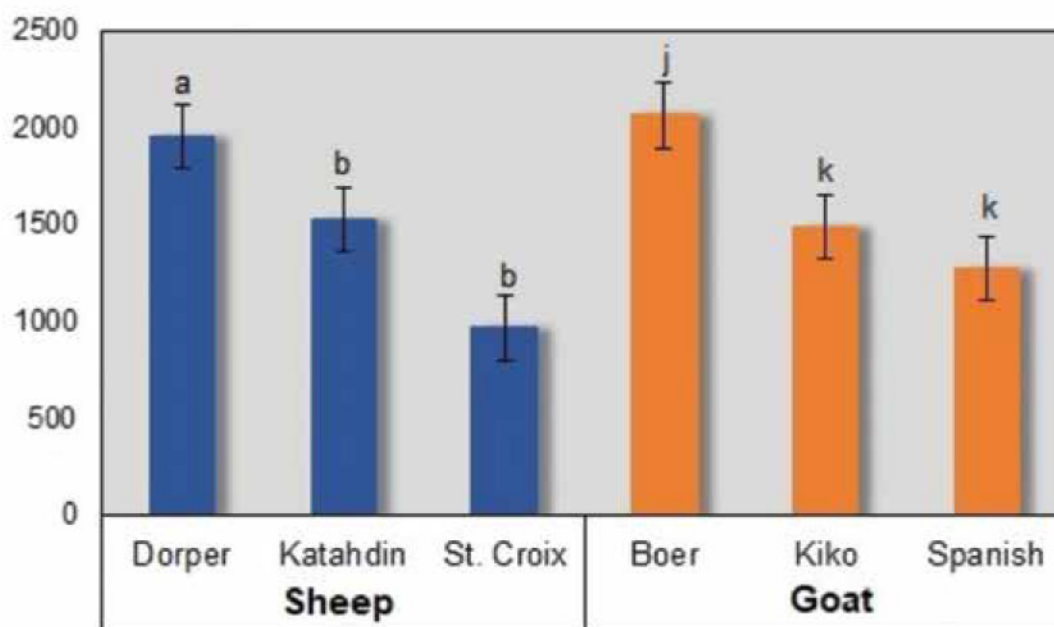
genetic markers can be included in sheep and goat breeding programs to identify at an early age, individuals with enhanced resistance.

Genetic markers are small pieces of DNA, or single nucleotide polymorphisms (SNPs), with a known location on the animal's genome and associated with a particular gene or trait. Thus, if SNPs that control resistance to gastrointestinal nematodes are detected, they can be used in selection to identify genetically superior rams and bucks early in life. Moreover, selection for enhanced resistance creates unique genetic patterns in the genome of these species that can be traced back.

A research project funded by the USDA National Institute of Food and Agriculture

See Genetic Markers page 21

Fecal egg count (FEC)



Different letters indicate significant differences at $p < 0.05$.

Figure 1. Bar graph of fecal egg count in sheep and goats during *H. contortus* infection.

GENETIC MARKERS From page 20

1890 Institution Capacity Building Grant Program was designed to explore the genetics of resistance to gastrointestinal parasites in sheep and goats. For this project, phenotypic records from commercial farms in Arkansas, Kansas, and Missouri, and the American Institute for Goat Research at Langston University Oklahoma were used. The study comprised 143 male sheep and goats, respectively. The study comprised Dorper, Katahdin and St. Croix sheep, and Boer, Kiko and Spanish goats and these breeds were used to construct the phenotype-genotype databases. To illustrate the phenotypic variation across species and between breeds in the study, a bar graph of fecal egg count is presented (See Figure 1).

Several traits were measured in sheep and goats, including fecal egg count, hematocrit, average daily gain, and immunoglobulin levels. Genomic DNA obtained from blood samples of these species was utilized for sequencing using a targeted approach. Then genotypes from SNP data were utilized to perform the identification of potential genetic markers associated with resistance to gastrointestinal nematodes and evaluate the genetic patterns for resistance.

Sheep populations presented lower fecal egg count and stronger humoral response than goat breeds. For sheep, St. Croix had the lowest FEC among breeds. Among goats, the Spanish breed had the lowest FEC. Results from genotype analysis revealed that

for sheep, SNPs located on chromosome 1 and 2 were associated with ADG, IgM and FEC. For goats, SNPs located on chromosome 3 and 22 were associated with ADG and IgM. Although different SNPs were associated with resistance, significant markers within *IL12RB2* gene were identified in both species.

Moreover, shared immune response mechanisms between sheep and goats were identified in the genome of these species (See Figure 2). The *NOS2*, *CSF*, *TLR4*, and *CD86* genes were observed under selection in both species. These genes are key modulators of immune responses, and active players of parasite-antigen recognition by immune response cells such as dendritic cells and T-cells.

The conserved mechanisms of protection against *H. contortus* are most likely to be potential targets in the development of alternative nematode control strategies in both species, as they can be widely applied in production systems. For this reason, future efforts will focus on validation of the observed results and the unraveling of the genetic mechanisms used for controlling *H. contortus* or other gastrointestinal parasites in sheep and goats.

Figure 2. Gene network for the shared genes observed under selection in sheep and goats. Some similar mechanism are conserved between species and these are related to *NOS2*, *CSF*, *TLR4* and *CD86* genes.

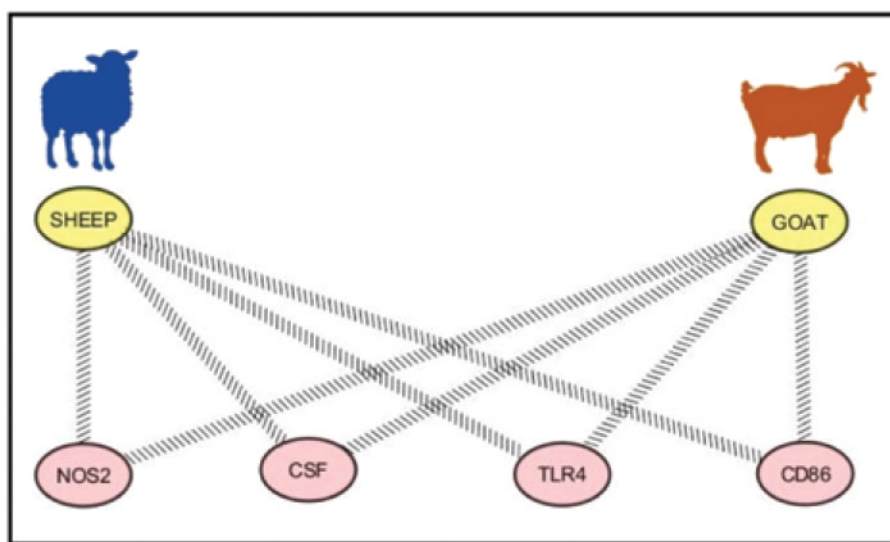


Figure 2. Gene network for the shared genes observed under selection in sheep and goats. Some similar mechanism are conserved between species and these are related to *NOS2*, *CSF*, *TLR4* and *CD86* genes.

an ancient breed
ICELANDICS
 for the modern farmer

www.isbona.com

FREE
 copy of the *Flock Record Book*
 available to subscribers

Send a self-addressed, stamped envelope (letter size) to:
 The Shepherd
 PO Box 168
 Farson, WY 82932

FLORIDA CRACKERS
 Genetics for
 Parasite Resistance

2018: 8 Texel/Florida Cracker Cross Lambs, 3 with Parasite Resistant Gene

FAIRMEADOW FARM
 Ocala, Florida
 Ph: (352) 843-8440
 (8:00 a.m. best)
www.fairmeadowsheepfarm.com